

# Bowl-Tronics Enterprises Incorporated

Address: 1115 Sherwood Ave.  
Elgin IL. 60120  
Website: [www.bowl-tronics.com](http://www.bowl-tronics.com)  
E-mail: [rick@bowl-tronics.com](mailto:rick@bowl-tronics.com)

Phone: 847-741-4500  
Fax: 847-741-0914

## Brunswick Pinsetter Saver Motor Control (PS-1-AS)

### BRC Pinsetter Saver Motor Control W/ Booster/Accelerator Shutdown Theory

When the machine is first turned on the (PS-1-AS) will keep the pinsetter and booster/accelerator motor off until the micro switch on the 4 to 1 housing is activated or the new reset button is pushed. The LED will be lit when the machine is not running and is in standby mode. The motor shut off time is set by the potentiometer. The time decreases when you turn it in a clockwise rotation. The time adjustment is from 3 to 5 minutes.

### Installation Instructions

*Remember to remove power before performing any installation!!*

The (PS-1-AS) mounts on the wire channel as shown in the photo (Fig. 1) on back of page. Position the (PS-1-AS) just behind the motor plug on the wire channel. Run the switch cable along the back of the catwalk using the cable clamps provided to fasten the cable. Mount the reset switch and standby LED on the back of the catwalk close to the mechanics reset button shown in the photo (Fig. 2) on back of page. Mount the micro switch on the 4 to 1 housing as shown in the photo (Fig. 3) on back of page. Make sure that the switch lever is under the clutch lever assembly and that the switch lever is fully depressed when the machine is at 0 degrees. Next, install the booster/accelerator 6 ft. long 2 wire cable along the wire channel and use the wire ties provided to secure the wire to the channel. Enter the electrical box where it is most convenient. Unplug wire #36 from TS2 and crimp on the blue female bullet connector. Place the "Y" connector from the (PS-1-AS) to TS2-9 and connect the red male bullet connector from the (PS-1-AS) to the female blue connector wire #36. View wire diagram (Fig. 4) on back page for further installation. Remove the motor plug from the wire channel and plug the motor into the (PS-1-AS). Plug the (PS-1-AS) into the motor plug socket in the wire channel. Turn power back on and test.

### For Repair Send Faulty Parts to:

Address: BOWL-TRONICS  
1115 Sherwood Ave.  
Elgin IL. 60120

Phone: 847-741-4500  
Fax: 847-741-0914

Visit our web site at [www.bowl-tronics.com](http://www.bowl-tronics.com)

Notes:

---

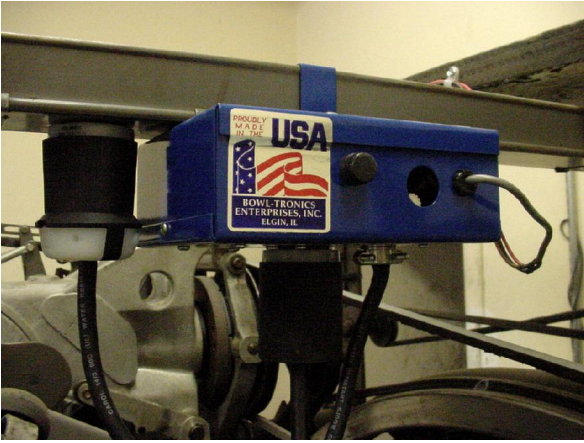
---

---

---

---

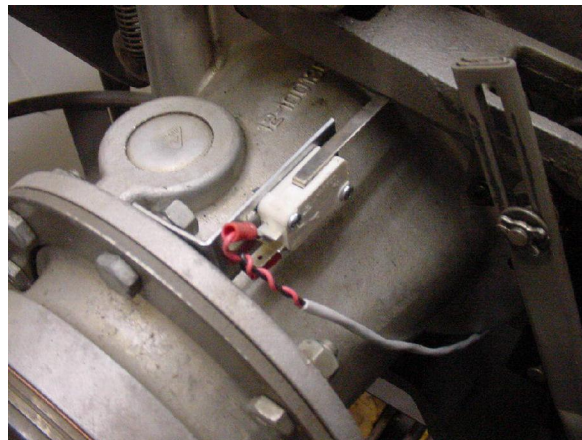
# Brunswick Pinsetter Saver Motor Control (PS-1-AS)



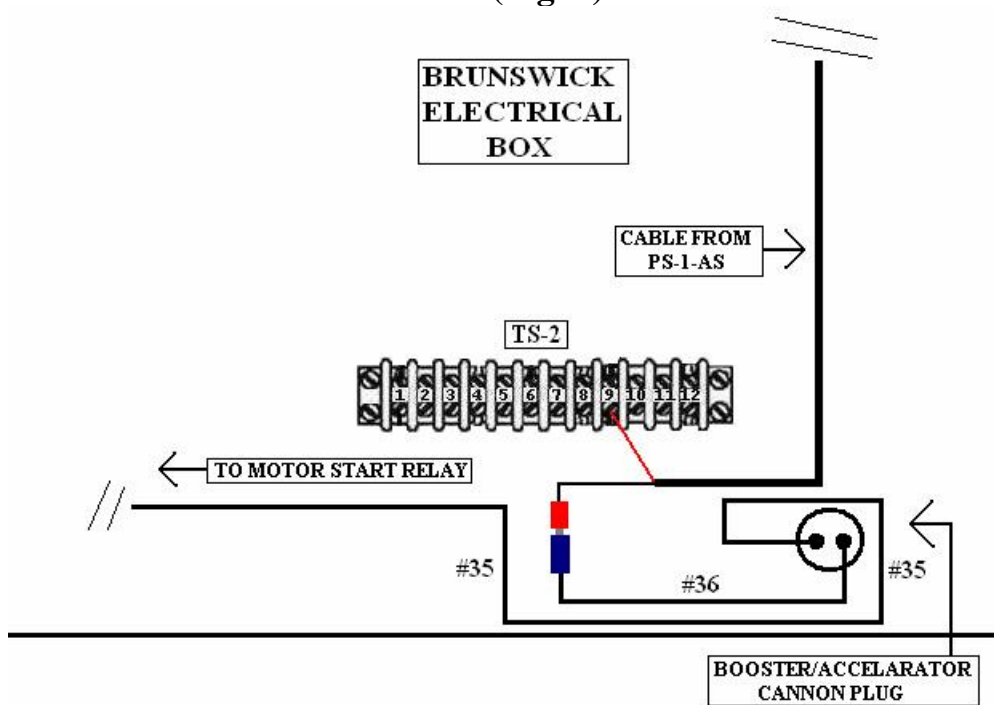
(Fig. 1)



(Fig. 2)



(Fig. 3)



(Fig. 4)